



2024-2028 STRATEGIC PLAN
**AN EFFICIENT, SUSTAINABLE
AND RESILIENT PORT COMPLEX
FOR FRENCH GUIANA**

Five years to get ready

COMPONENT 1

A SUSTAINABLE AND STRUCTURING DEVELOPMENT STRATEGY

The 2024-2028 Strategic Plan is built around **4 major axes**, which reflect a commitment to continued investment in modernization, openness and regional integration, decarbonization and development of an innovation platform for the energy transition.

- Axis 1** Put the finishing touches to modernization of port operations and facilities, while looking ahead to future long-term developments.
- Axis 2** Continue improving port infrastructure to enable safe and efficient access to the port through the construction of a new RoRo terminal.
- Axis 3** Contribute to securing the overall supply chain for French Guiana, and more particularly the territory's food sovereignty, in the context of regional integration in the Guiana Shield.
- Axis 4** Meet the challenges of sustainable development of the territory and support the energy transition in French Guiana. Be a sustainable and resilient port complex.

Commitment to sustainable development

Balanced, fair, sustainable. A dozen potential sectors for the future, with a ripple effect, oriented towards the local market and export

Coherence with national port strategy

- with the European priorities of the Union of French Ports (UPF)¹,
- with the goal of sustainable, smart and inclusive blue growth and social, economic and territorial cohesion.

Identification of sources of growth besides the space industry

Mining sector, renewable energies, wood industry, blue economy, waste management sector, tourism.



PORT DIGITALIZATION

- Set up an IT Master Plan
- Update process mapping
- Launch the SIC GUYANE² web application
- Implement the 2nd development phase of IAG BOOST



Projects are classified according to three priority levels:

- **Group A:** projects that are underway and totally or partially financed.
- **Group B:** priority projects, corresponding to the primary function of port access.
- **Group C:** projects to program, to further port development.
- **Group D:** actions to prepare the long-term future beyond 2028.



The vessel Canopée in the port of Pariacabo (Kourou)

COMPONENT 2

INVESTMENT PROGRAM AND PORT FINANCES

22 M€ turnover in 2024

70 M€ of investments carried out between 2024 and 2028

85 M€ of committed funds with:

- **42 M€** of investment grants
- **8 M€** of tax credits
- **35 M€** of own funds

COMPONENT 3

MODERNIZATION OF PUBLIC HANDLING FACILITIES

GPM³ Guyane is continuing its modernization/renovation activities on infrastructure and superstructures, so that operators can work efficiently and safely.

- Commissioning of cranes
- Development of petroleum storage yard
- RoRo reconstruction
- Storage yard and rear channel renovations in Q3
- Demolition of ex-DGTM workshop, storage yard integration
- Storage yards security upgrade
- Sector 4 acquisition and construction works, logistics and maintenance

COMPONENT 5

PORT CONNECTIVITY, INTERMODALITY

GPM Guyane is focusing on several projects to develop a more virtuous transport economy to serve the territory:

- Strengthening of the RoRo transport supply from Europe (Source: MARFRET) with roll on/roll off vessels that are more virtuous and emit fewer pollutants (rigid sails)
- Freight service to the CSG via the port of Pariacabo with a wind-assisted propulsion (engine/rigid sails) roll on/roll off vessel
- Project for a regional short sea shipping service under development: Eventually, once the line has been consolidated, a multi-purpose cargo vessel with rigid sails will also dock in French Guiana.

Shipping services:

- New regionalized maritime connections
- Land-based and maritime intermodality
- Intermodality with the logistics platform (Dry Port) at the Oyapock bridge

Interport Conference of the Guiana Shield

Created and organized by GPM Guyane, the conference connects the ports of Guyana, Suriname, French Guiana and the states of Pará and Amapá in a network. Following the first editions in 2022 in Belém and 2024 in Cayenne, the next conference will be held in 2026.

Interport cooperation:

Further development of INTERAMERICAS GATE BOOST, an interport economic observatory stretching from the Guiana Shield to the Caribbean, with GPM Guadeloupe, GPM Martinique, the Port of Saint-Martin and PMAC⁷.

Opening of the port towards its territory: Port Center.

COMPONENT 4

SPATIAL PLANNING AND SUSTAINABLE DEVELOPMENT

The aim is to create a sustainable energy model for the port, achieving the right balance between pursuing high-performance development and actions to foster decarbonization of the port complex.

In compliance with the requirements of the law on energy transition for green growth, the project plans to:

- Reach a 32% share of renewable energy in the final gross energy consumption by 2030
- Halve final energy consumption by 2050 (compared to 2012)
- Reduce the volume of waste sent to landfill by 50% by 2050

- Axis 0** Improve port capacity and performance by implementing a land policy that ensures a homogenous port area.
- Axis 1** Confirm GPM's commitment to the energy transition for green growth.
- Axis 2** Preserve the environment and biodiversity and apply the avoid-reduce-compensate doctrine.
- Axis 3** Take into account natural and technological risks when defining spatial planning projects.
- Axis 4** Manage and recover waste and promote the circular economy (vessels, construction works, etc.).
- Axis 5** Preserve freshwater resources and air quality.
- Axis 6** Support the implementation of low carbon intermodal freight transport.

MODELING THE 2024-2028 STRATEGIC PLAN

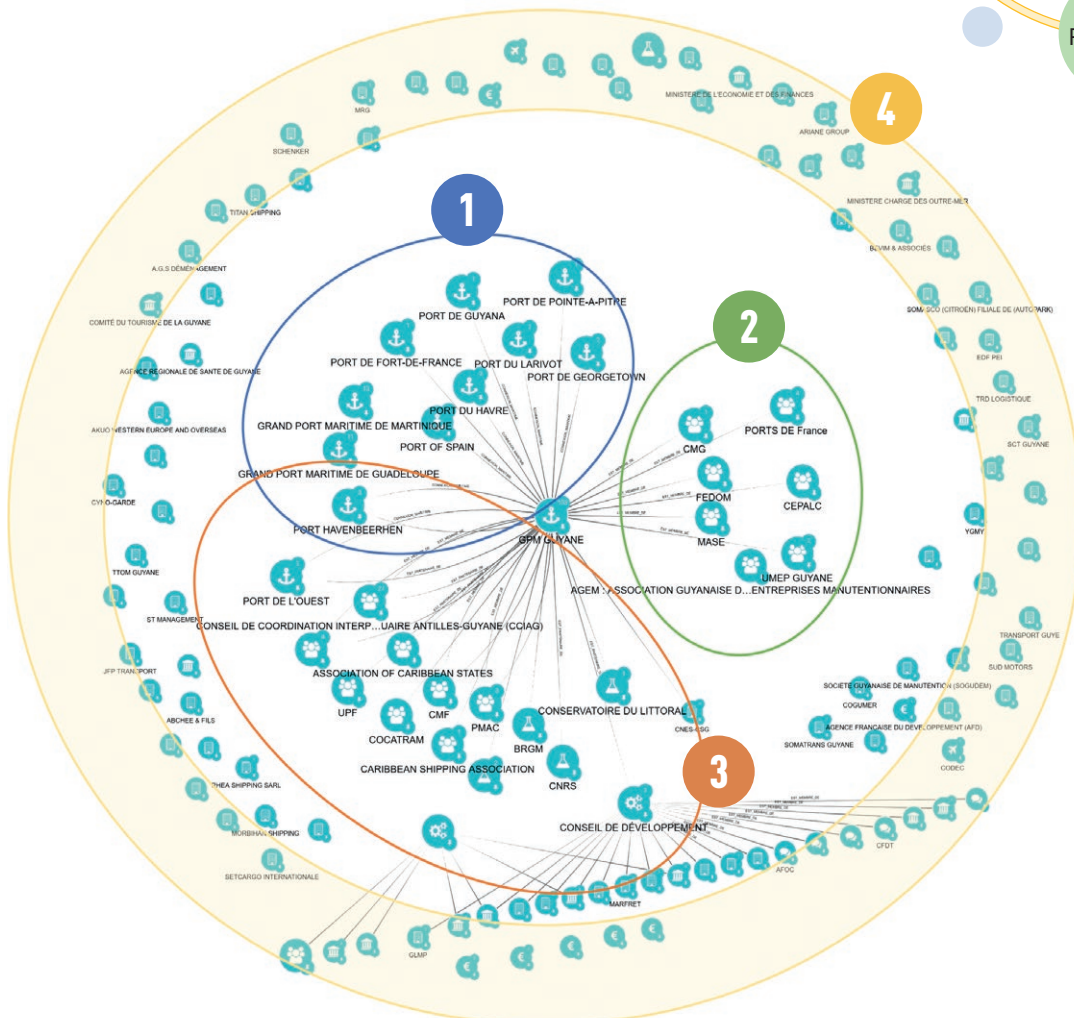
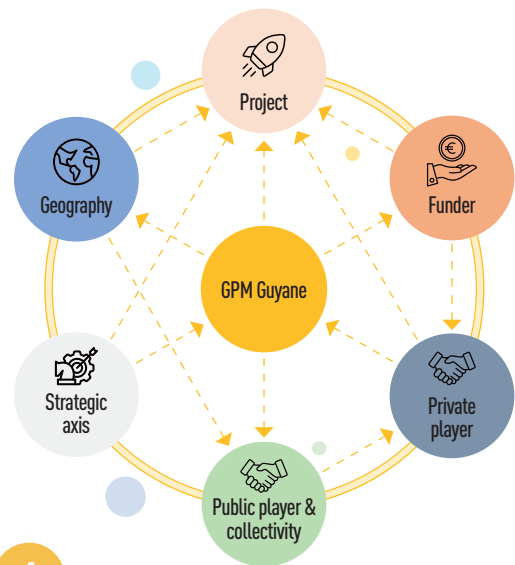
PROMOTE THE PORT AS A TOOL FOR TERRITORIAL DEVELOPMENT AND INNOVATION SERVING THE COMMON GOOD THANKS TO MODELING OF ITS ECOSYSTEM.

GPM Guyane, due to its position as a key player in the territory, is at the crossroads of numerous challenges (geographic, regulatory, socioeconomic, environmental, etc.) and is linked to a highly complex ecosystem of players, projects and funding.

A rigorously mapped ecosystem enables GPM Guyane:

- to identify the coherence of the strategic plan by structuring and making visible the ties between the projects it participates in, in order to provide outside players with an overall vision of the role of GPM Guyane,
- to demonstrate the fit between GPM Guyane's strategic plan and the development of the territory, as well as the pivotal role the port plays in the Guiana Shield and the Caribbean,
- to better understand and activate its internal and external ecosystem in order to reach its strategic objectives, by promoting the alignment between its projects and the strategic ambitions of other players.

By making explicit the central role of GPM in the logistics chain and linking its initiatives to the development objectives of its partners, this modeling provides a basis to attract new funding and develop strategic partnerships. Modeling GPM's ecosystem should make it possible to promote the port as a tool for the common good serving sustainable economic growth in French Guiana.



- | | | | |
|---|---|---|---------------------------------|
|  | 14 Maritime and inland ports |  | 86 Private players |
|  | 3 Unions |  | 31 Public players |
|  | 2 Governance |  | 8 Financial players |
|  | 23 Group/network/cluster |  | 10 Foreign organizations |
|  | 6 Research/teaching institutions | | |
-
- | | |
|-------------------------|--|
| 1 Maritime links | 2 Network membership |
| 3 Partnerships | 4 Various ties to port projects |

GPM GUYANE IN FIGURES

1 million tons
of overall traffic

2 ports under management,

Dégrad-des-Cannes in Rémire-Montjoly
and Pariacabo in Kourou

75,777 TEUs
including 60% full imports

Increasing turnover of

22 M€

More than **100 M€** invested
between 2013 and 2023

Port area of

1,750 ha
over 5 sites

Control over

48 ha
of land at Dégrad-des-Cannes



According to a 2021 INSEE/GPM
Guyane study, the industrial-port
complex represents:

67 businesses

1,180 direct jobs

750 indirect jobs

and wealth creation amounting to

105.3 M€

(Source: 2021 INSEE Study)



Zone de Dégrad-des-Cannes - 97354 Rémire-Montjoly
FRENCH GUIANA
Tel: +594 (0)594 29 96 60 - info@portdeguyane.fr

www.portdeguyane.fr



Glossary:

¹ UPF: Union of French Ports

² SIG Guyane: GIS: Geographic Information System

³ GPM: French Guiana Port

⁴ PCF: BIP: border inspection post

⁵ POMU: Offshore Multi-purpose platform

⁶ EMR: MRE: marine renewable energies

⁷ PMAC: Port Management Association of the Caribbean